

Panther Lake Library Community Meeting #2

6:30pm – 8pm

Agenda:

- Introductions (5 min)
- Project background (15 min)
- Current designs (30 min)
- Summary and next steps (5 min)
- Informal discussion (15 min)

Please sign in and take a name tag!



F i v e d o t



SITE

Panther Lake

KENTRIDGE HIGH SCHOOL

EMERALD PARK ELEMENTARY SCHOOL

108th Avenue Southeast

Southeast 208th Street

Southeast 208th Street

Southeast 208th Street

Southeast 208th Street

108th Avenue Southeast

116th Avenue Southeast

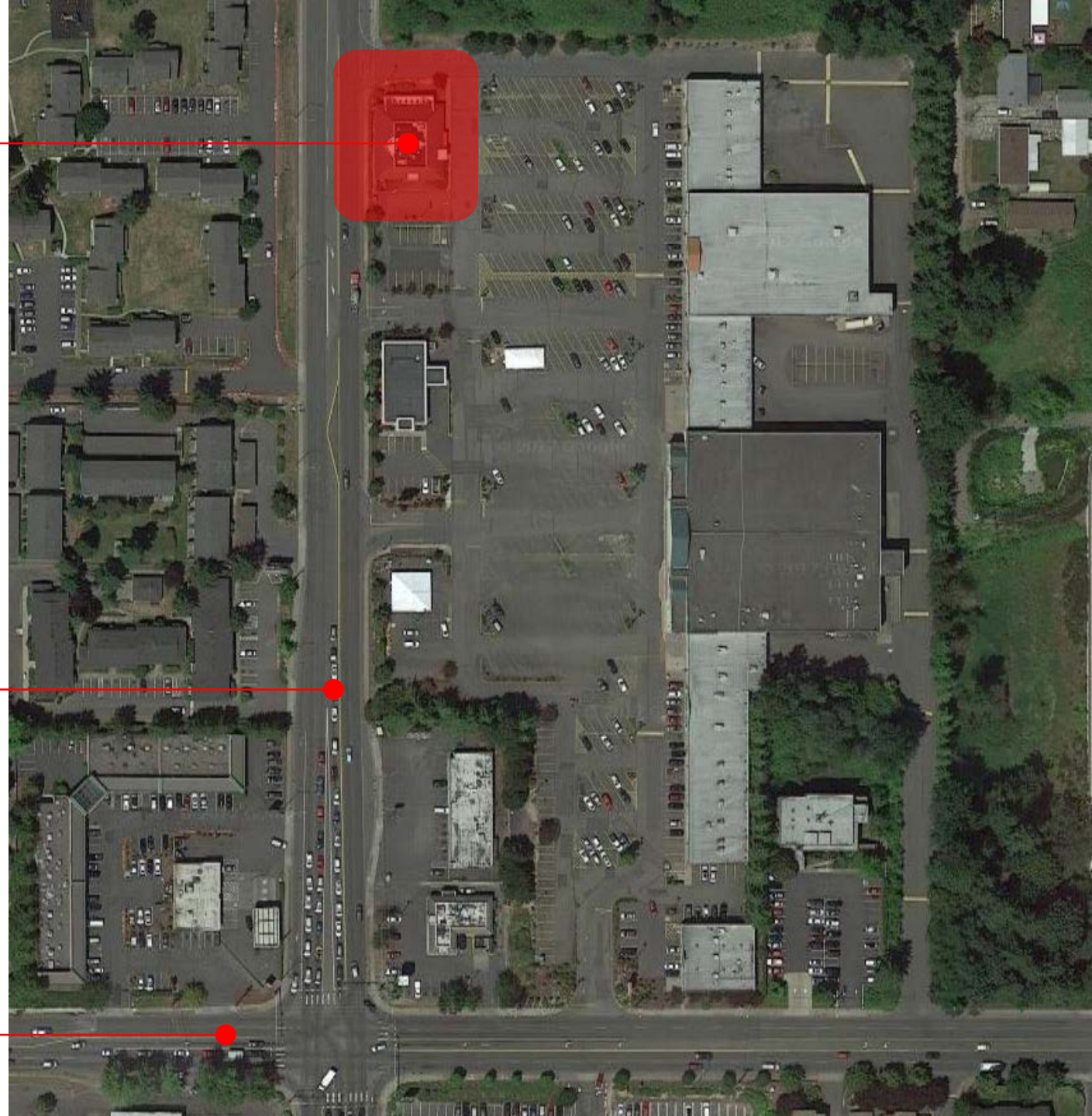
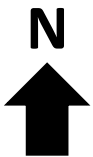
132nd Avenue Southeast

12th Street

FUTURE KENT PANTHER LAKE LIBRARY

108TH AVE SE

SE 208TH ST





EAST ELEVATION



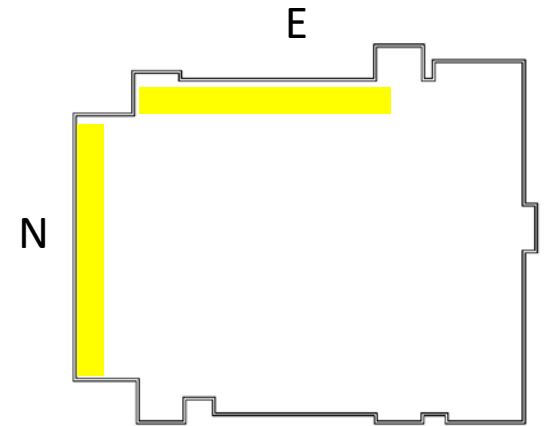
SOUTH ELEVATION

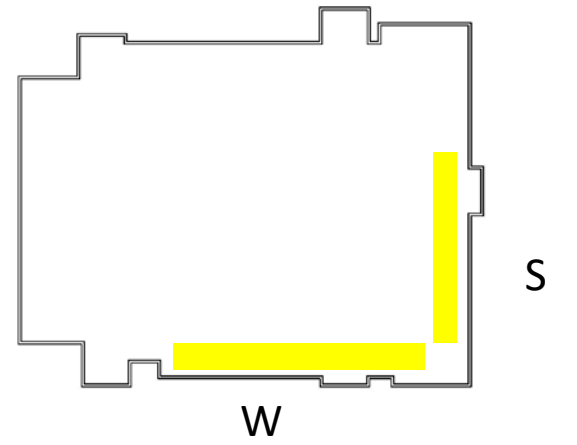


NORTH ELEVATION



WEST ELEVATION





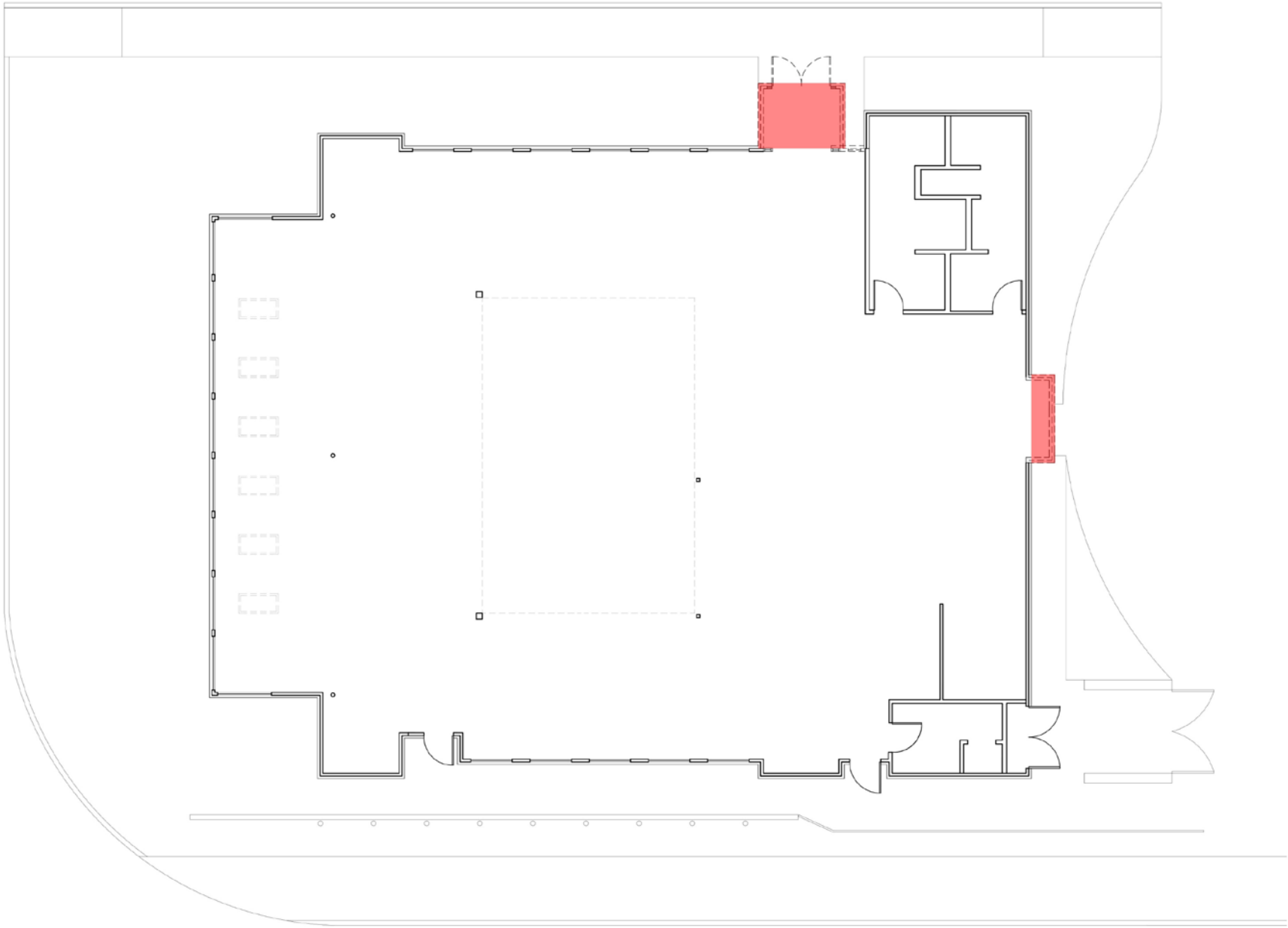
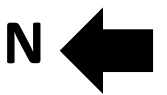
Community meeting #1 Feedback

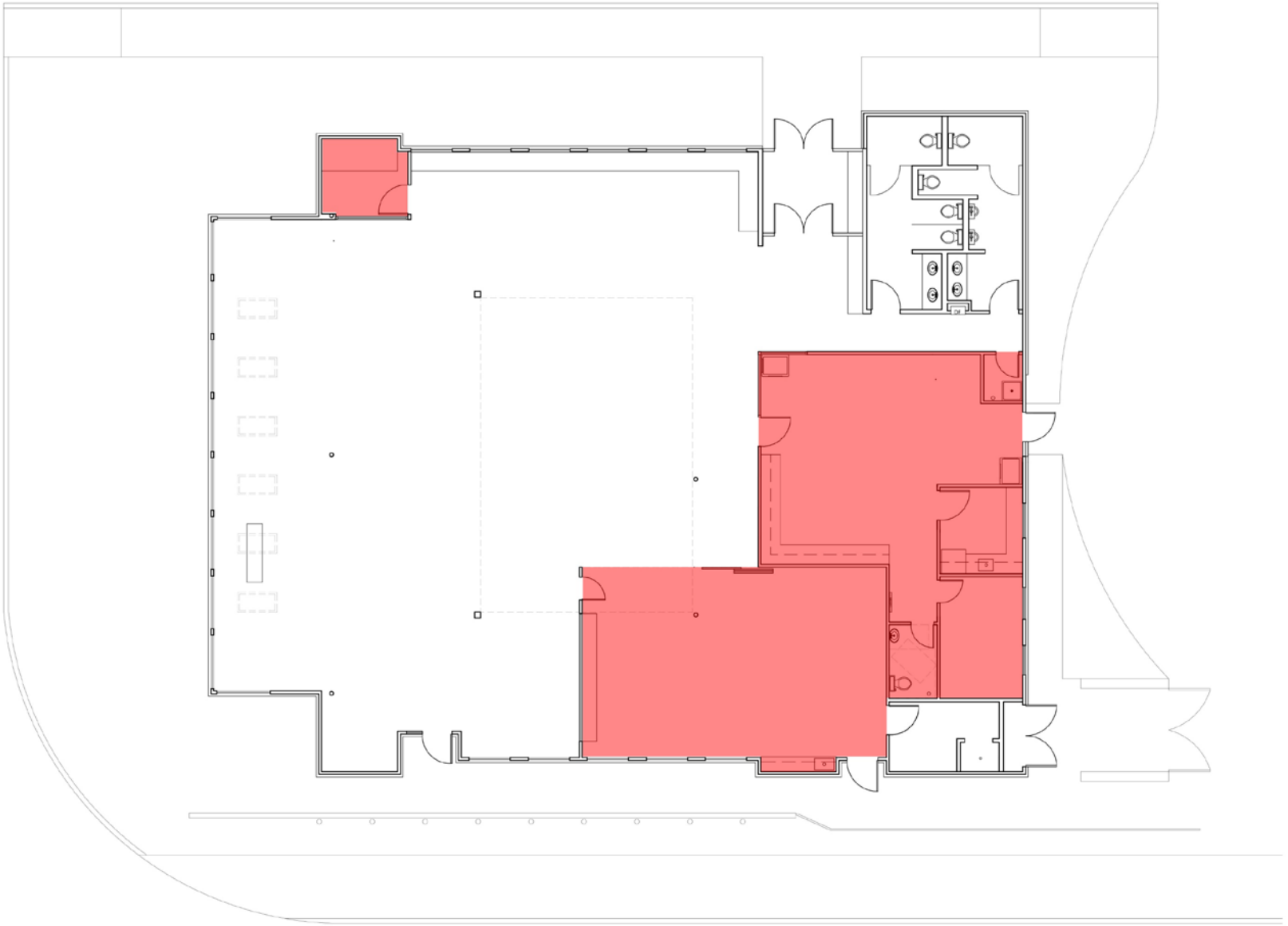
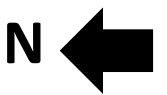
- Technological resources including wifi, internet, printing
- Holds
- Programming for all ages from toddlers to seniors
- Study room - More space for young people to collaborate for school projects
- Small meeting rooms that are enclosed – do not disturb area
- Larger meeting room (30 people)
- Computer and tech in meeting room
- Places for reading with comfortable and soft chairs
- Nice kids area for them to enjoy
- Space that feel comfortable and safe to borrow and return books
- Good collections of books including genealogy and ESL collections with at least 4 languages
- Reflecting the diversity of Kent
- Site / location concern around the building and crossing the street
- Emphasis on books and reading
- Acoustics and quiet area for reading
- Friends of the library shelves
- Encourage community
- Provide information desk
- Kids area to be colorful and excited
- Reference and periodical materials and magazines
- Outdoor space that is landscaped
- Connection to outside, such as bird watching station and park
- Seeds library for people to check out
- Check out system for art works display
- Reading area with nice views, windows, and natural light

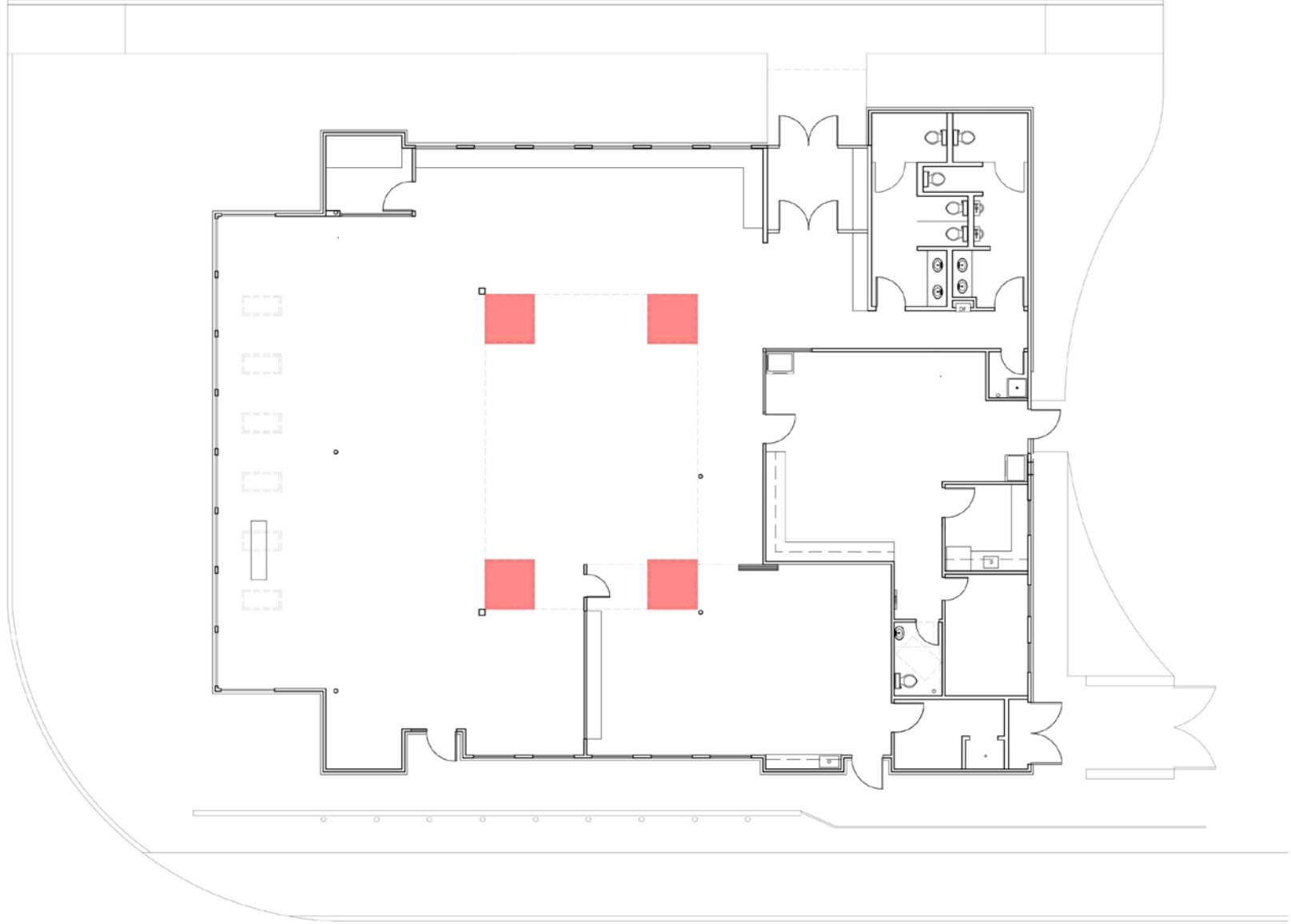
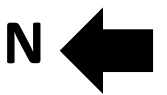


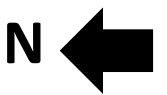
Design Goals

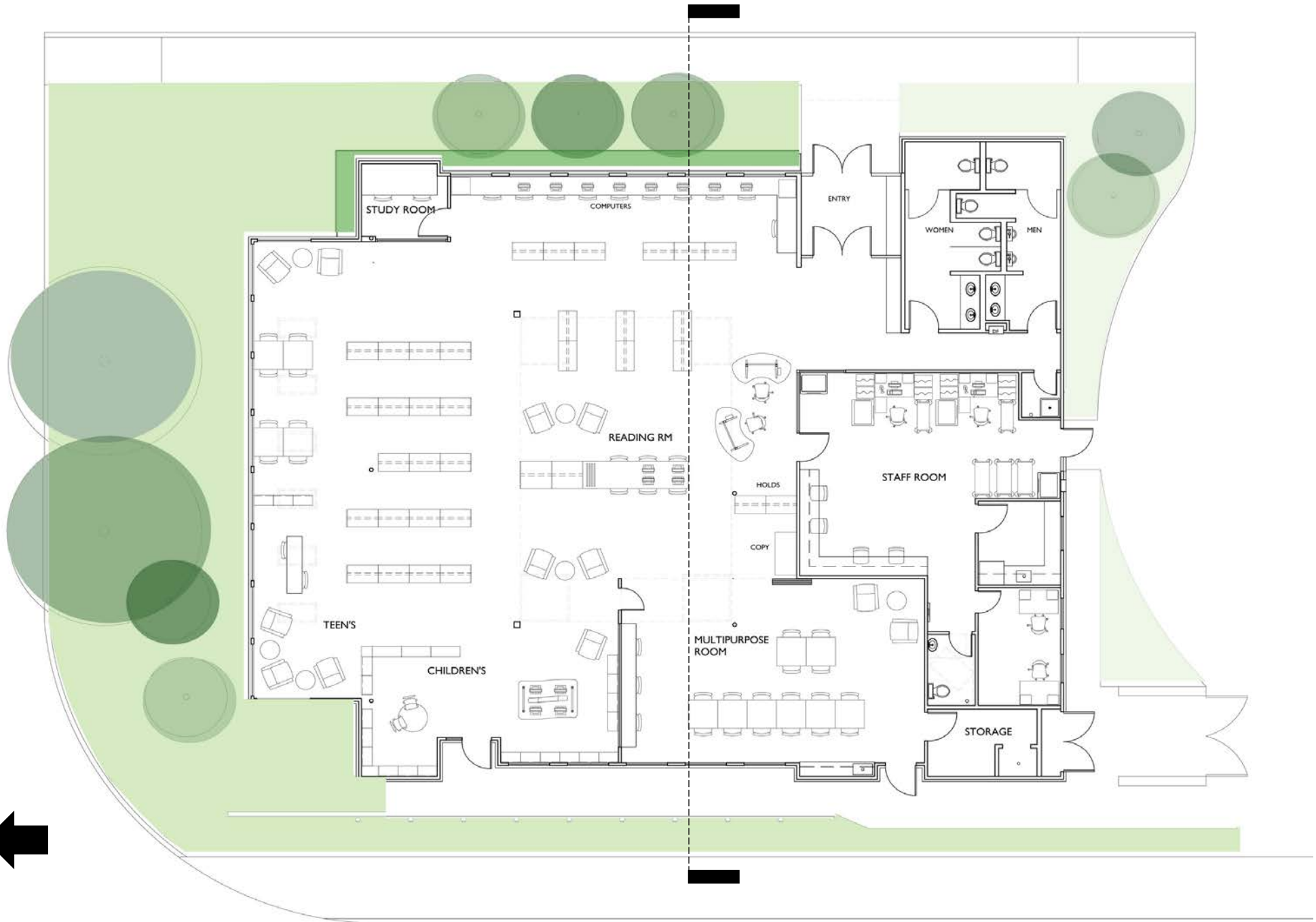
1. Provide engaging spaces for reading, studying and collaborating
2. Provide access to technology and books for all
3. Create a light filled space that feels connected to the outside

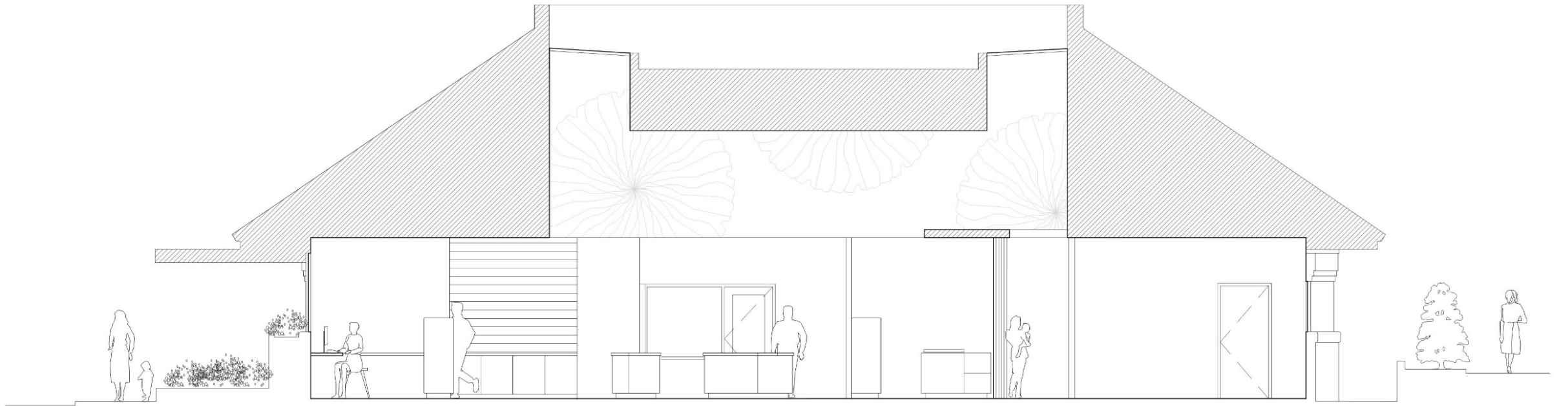


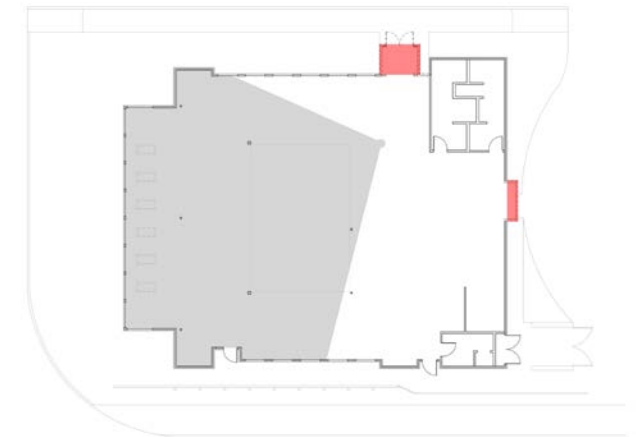




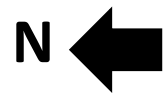




























Expected completion: mid 2018

For project updates, please visit:
www.kcls.org/east-hill-of-kent-bond-project/