

East Kent Library Community Meeting #1

6:30pm – 8pm

Agenda:

- Introductions (5 min)
- Project background (15 min)
- Design exercise #1 (40 min)
- Design exercise #2 (15 min)
- Informal discussion (15 min)

Please sign in and take a name tag!





SITE

Panther Lake

KENTRIDGE HIGH SCHOOL

EMERALD PARK ELEMENTARY SCHOOL

108th Avenue Southeast

Southeast 208th Street

Southeast 208th Street

Southeast 208th Street

Southeast 208th Street

12th Street

108th Avenue Southeast

116th Avenue Southeast

132nd Avenue Southeast

FUTURE EAST KENT LIBRARY



108TH AVE SE



SE 208TH ST





EAST ELEVATION



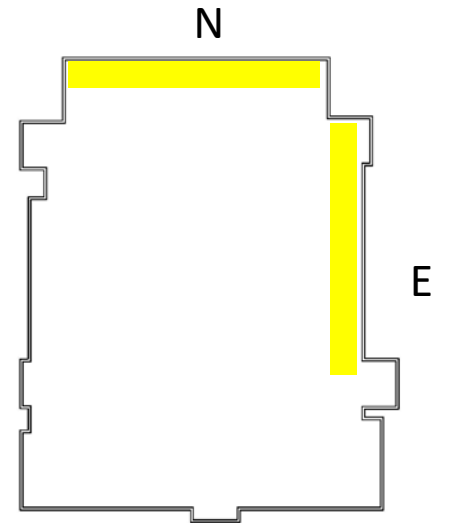
SOUTH ELEVATION

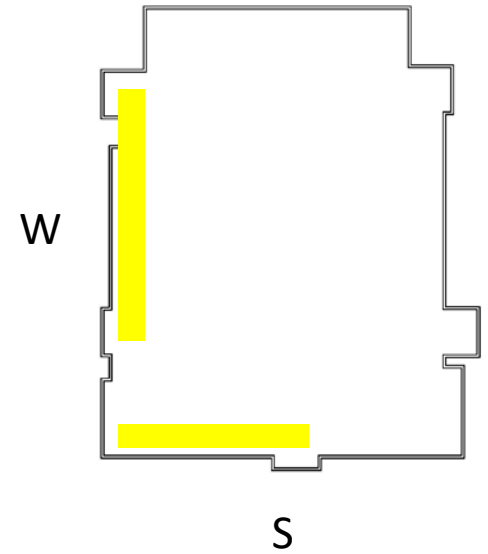


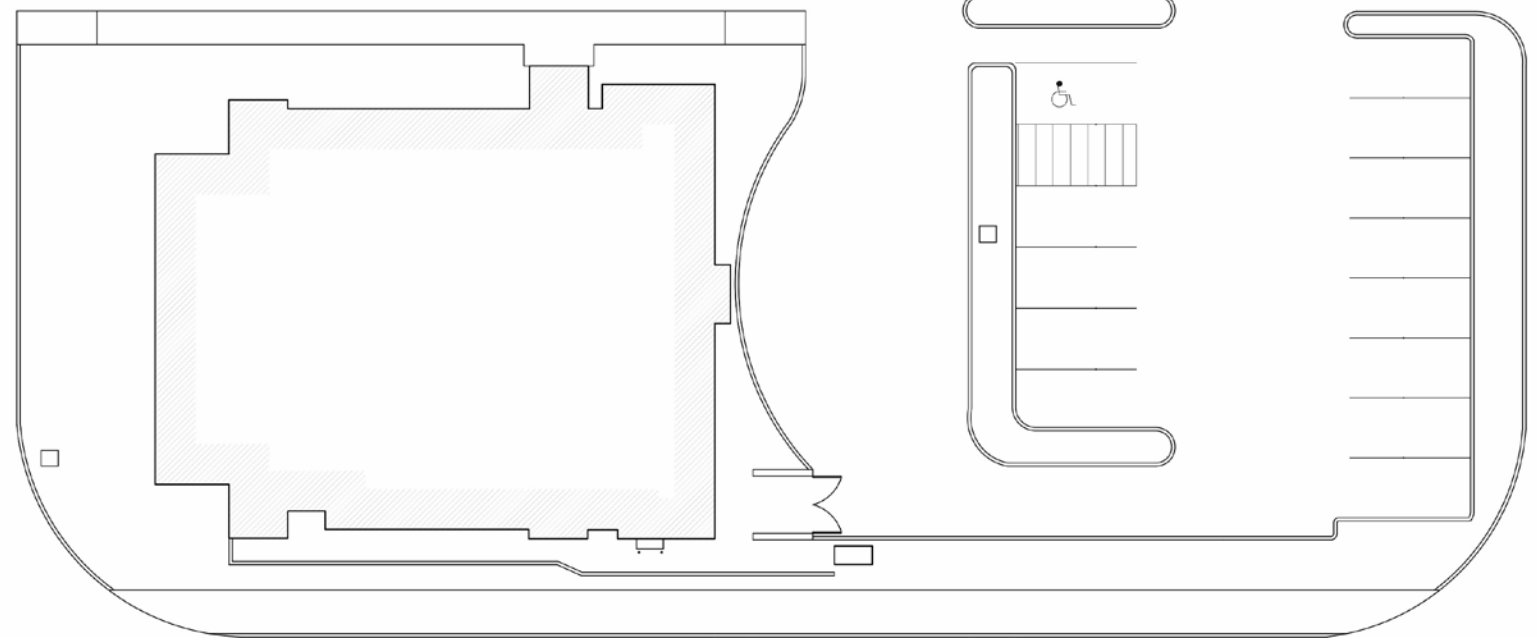
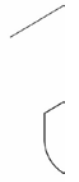
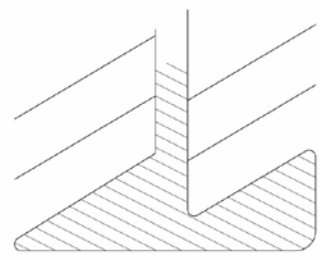
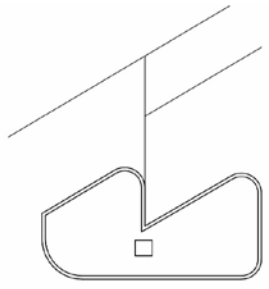
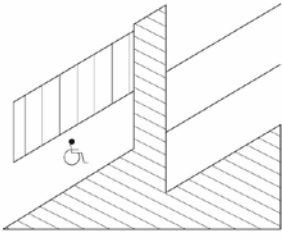
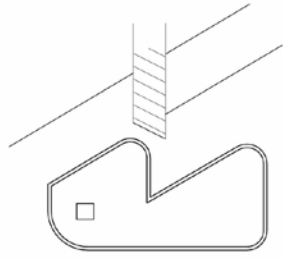
NORTH ELEVATION



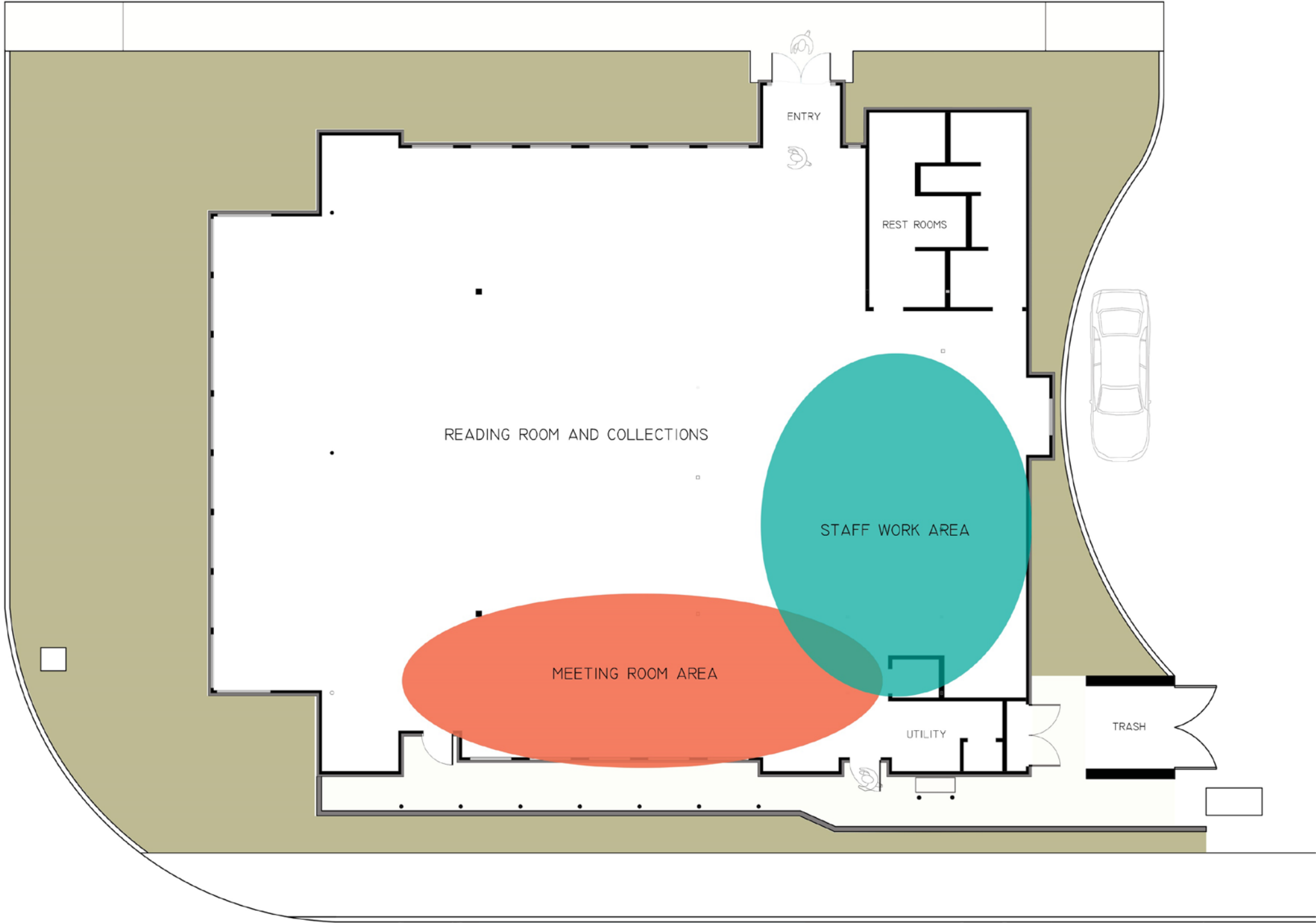
WEST ELEVATION







108TH AVE SW



ENTRY

REST ROOMS

READING ROOM AND COLLECTIONS

STAFF WORK AREA

MEETING ROOM AREA

UTILITY

TRASH

What do you want this
library to encourage?