

Using Magnifier on KCLS Computers

Magnifier is software to magnify the computer screen and invert color to high-contrast for better visibility. Magnifier software is available on all KCLS computers.

Start Magnifier:

1. Double-click the **Magnify** icon on the computer desktop.
 - a. It will open in **Full Screen** magnification.
 - b. You will see a **Magnifying glass** when you cannot see the taskbar at the bottom of the screen. Click the Magnifying glass to display the Magnifier toolbar.



Magnify icon



Magnifying glass

Change the Magnification:

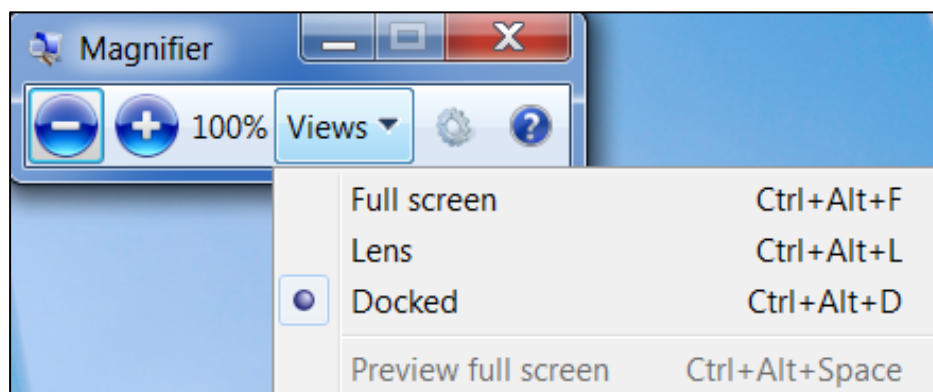
1. Click the **Minus (-)** to reduce the magnification.
2. Click the **Plus (+)** to increase the magnification.

Change the View:

1. Click the **Views down arrow**.
 - a. **Full Screen** – the entire screen is magnified
 - b. **Lens** – a box will open magnifying just the information in that box. See below for adjusting the size of the lens box.
 - c. **Docked** – The top portion of the screen will be magnified showing what is being selected in the lower portion of the screen. The amount of the docked area can be increased or decreased by putting the mouse on the frame of the docked section, holding down the left-mouse key and dragging to resize.



Views down arrow



View options menu

Change Options:

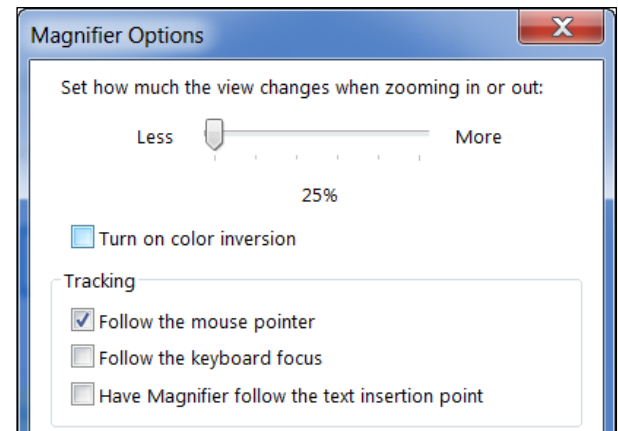
1. Click **Options** on the Magnifier Toolbar.
 - a. The Options available will change depending on the **View** you have selected.



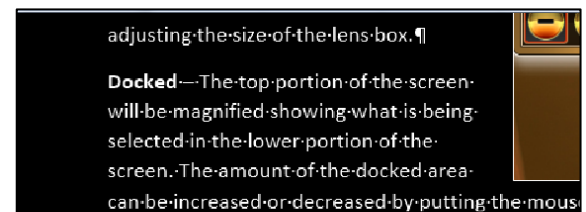
Options icon

The Options listed below available for **all** Views:

- **Zooming** – This determines how much the magnification will change when clicking the Minus (-) or Plus (+). The default is **100%**.
- **Color Inversion** – Will change the background to black, text to white and mute the colors
- **Mouse Pointer** – The Magnifier window will move then the mouse pointer approaches or when the mouse pointer hits the edge of the Magnifier window. (This is the default.)
- **Follow the keyboard focus** – Displays the area around the pointer when you press the **Tab** or arrow keys.
- **Text insertion point** – Displays the area around the text that you are typing.



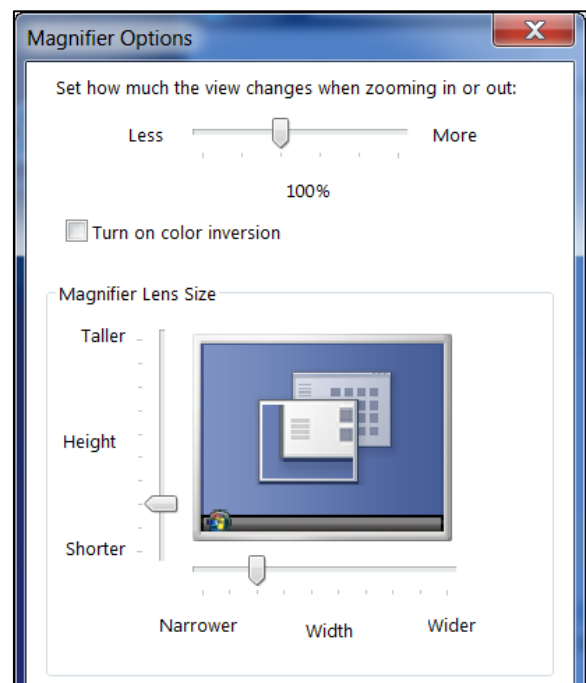
Zooming and Color Inversion options



Example of Color Inversion

Change the Lens Size:

1. Click **Options** on the Magnifier Toolbar.
 - a. You must be in the Lens View to see these options.
2. Hold and drag the left-mouse button.
 - a. Drag the **Height** slider to make taller or shorter.
 - b. Drag the **Width** slider to make narrower or wider.



Lens Size Options